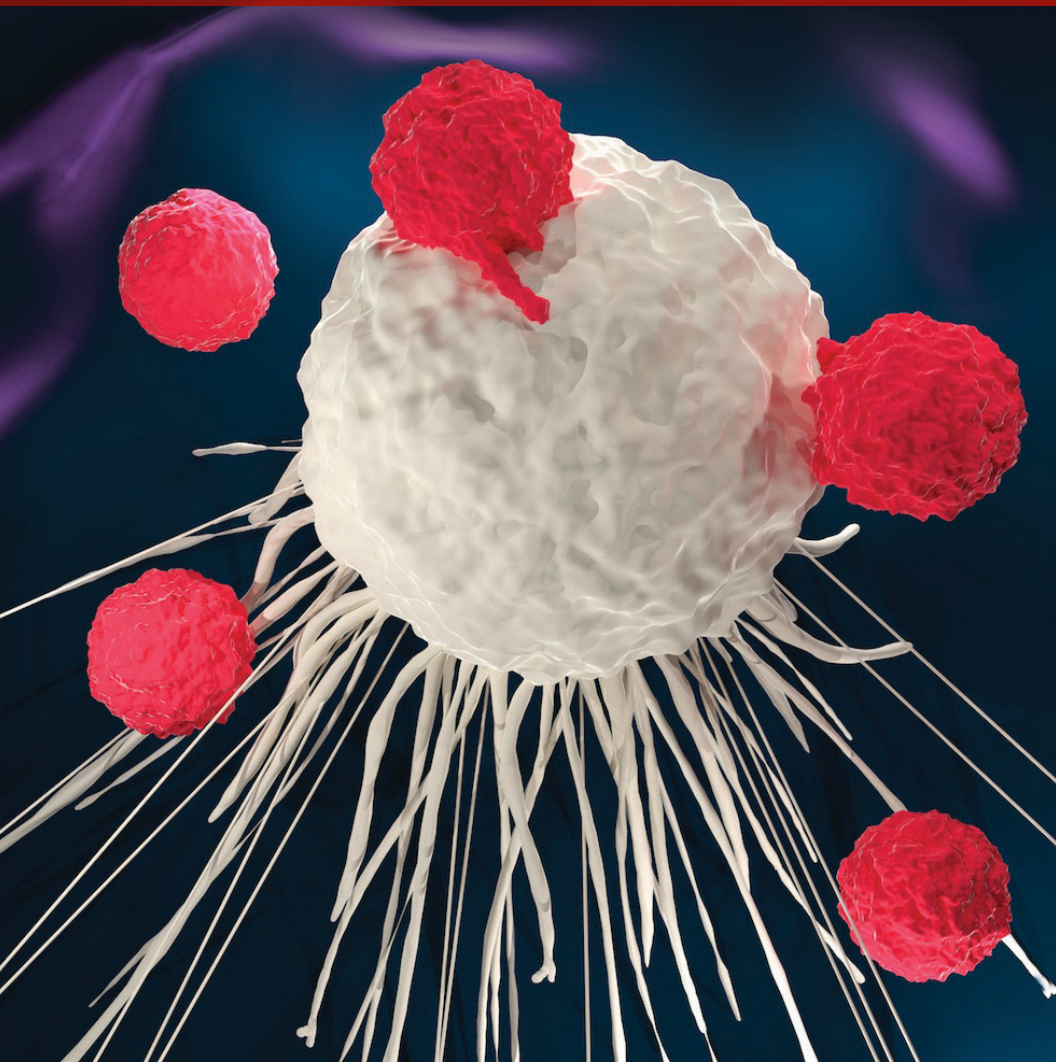


# Contemporary Critical Care Complications of SCT/Cellular Therapies

*Virtual Simulation and Live-Streaming Conference*  
**May 27, 2021**



PALISI

HSCT/CANCER IMMUNOTHERAPY  
SUBGROUP



THE UNIVERSITY OF TEXAS

MD Anderson  
Cancer Center

Children's Cancer Hospital®



Association of Pediatric  
Hematology/Oncology Nurses

# Goal

This conference aims to improve the care outcomes of Pediatric Stem Cell Transplant and Cellular Therapies patients through early recognition and management of critical care complications and the use of effective communication among interdisciplinary team members.

## Course Description

This virtual conference is designed for healthcare professionals, emphasizing critical care complications of Stem Cell Transplantation- Immune Effector Cell (SCT-IEC) in the pediatric population. It will combine live lectures, and synchronous simulation activity using a Virtual Reality platform. The virtual reality (VR) technology will provide an immersive experience to the learners. Group debriefing and panel discussion will follow the VR simulation.

## Educational Objectives

At the end of the conference, participants should be able to

- Improve communication between SCT-IEC and critical care teams during transition of care for pediatric SCT-IEC patients
- Increase critical care team competencies regarding care of children undergoing SCT-IEC who require critical care
- Identify future quality and research initiatives regarding interdisciplinary care of children undergoing SCT-IEC

## Target Audience

Nurses, physicians, fellows, mid-level providers working in pediatric critical care and transplant areas.

## Educational Methods

- Didactic/Lectures
- Simulations
- Panel Discussions

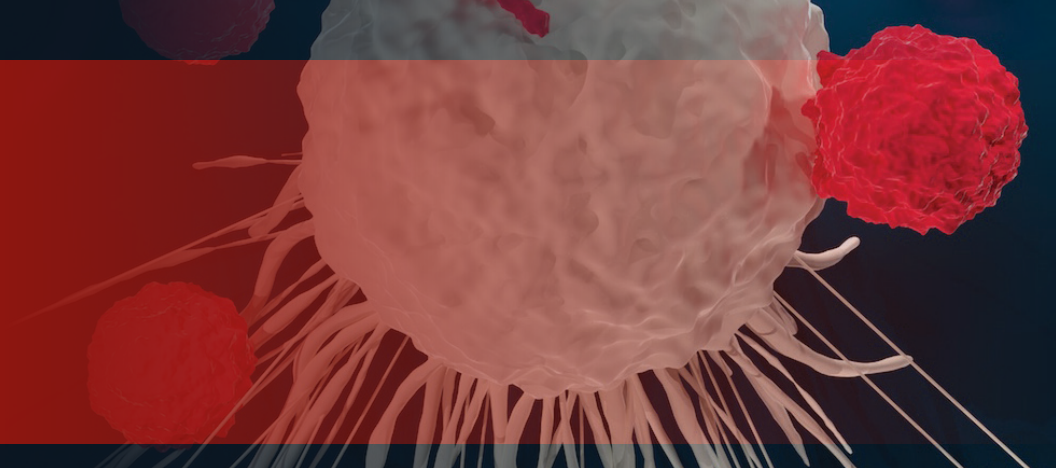
## Evaluation

A course evaluation link will provide participants with the opportunity to comment on the value of the program content to their practice decisions, performance improvement activities, or possible impact on patient health status. Participants will also have the opportunity to comment on any perceived commercial bias in the presentations as well as to identify future educational topics.

## Accreditation/ Credit Designation

The University of Texas MD Anderson Cancer Center is accredited by the Accreditation Council for Continuing Medical Education (ACCME) to provide continuing medical education for physicians.

The University of Texas MD Anderson Cancer Center designates this live activity for a maximum of 8.25 *AMA PRA Category 1 Credits™*. Physicians should claim only the credit commensurate with the extent of their participation in the activity.



## Nursing

The University of Texas MD Anderson Cancer Center is accredited with distinction as a provider of Nursing Continuing Professional Development by The American Nurses Credentialing Center's Commission on Accreditation.

The University of Texas MD Anderson Cancer Center designates this course will award 8.25 Nursing Continuing Professional Development (NCPD) credit.

## Certificates and Attendance Verification Certificates

Certificates awarding *AMA PRA Category 1 Credit™*, *ANCC credit* or certificates documenting attendance will be emailed when an individual completes the online Verification process and or evaluation after the conference.

## Planning Committee

Kris Mahadeo, MD, MPH, Co-Chair  
Priti Tewari, MD, Co-Chair  
James Cavalier, PhD, MBA, RN  
Matteo Di Nardo, MD  
Linette Ewing, DO  
Sarah Featherston, RN  
Daryl A. Gumban, MSN, RN, Nurse Planner  
Dristhi Ragoonanan, MD  
Courtney Rowan, MD  
Basirat Shoberu, PharmD  
Felisha Estelle  
Shelita Kimble  
Jeffrey Miller, ARPN

## Support Acknowledgement

The conference organizing committee wishes to express appreciation to **Jazz Pharmaceuticals** for their commitment to continuing medical education by providing an educational grant in support of this activity.

---

The University of Texas MD Anderson Cancer Center has implemented a process whereby everyone who is in a position to control the content of an educational activity must disclose all relevant financial relationships with any commercial interest that could potentially affect the information presented. MD Anderson also requires that all faculty disclose any unlabeled use or investigational use (not yet approved for any purpose) of pharmaceutical and medical device products. Specific disclosure will be made to the participants prior to the educational activity.

Agendas are subject to change because we are always striving to improve the quality of your educational experience. MD Anderson may substitute faculty with comparable expertise on rare occasions necessitated by illness, schedule conflicts, and so forth.

Photographing, audio taping and videotaping are prohibited.

# AGENDA

All scheduled time is central time zone

- 7:45 am **Online Registration Check-in**
- 8:30 **Welcome and Introduction**  
Kris Mahadeo, MD, MPH
- 8:45 **Immune Effector Cell Therapy Complications**  
Sarah Featherston, RN
- 9:30 **Evidence Based Management of SOS**  
Selim Corbacioglu, MD
- 10:10 Break

## Critical Care for Patients Receiving Cellular Therapies

- 10:15 **SESSION 1**
- A. ECMO/Cardiac Support of Pediatric SCT/IEC Patients**  
Matteo Di Nardo, MD
- B. Acute Kidney Injury and Renal Replacement Therapy in Pediatric SCT/IEC Patients**  
Sangeeta Hingorani, MD  
Theresa Mottes, APRN
- C. Respiratory Management of Pediatric SCT/IEC Patients**  
Courtney Rowan, MD  
Ali Ahmad, DO
- D. Neurological Complications, Differential Diagnosis and Imaging Findings after Cellular Therapy**  
Linda Chi, MD  
Brandon Brown, MD
- E. Pain, Symptom Management and End of Life Care Planning**  
Karen Moody, MD
- 11:00 Break
- 11:15 **SESSION 2**
- A. ECMO/Cardiac Support of Pediatric SCT/IEC Patients**  
Matteo Di Nardo, MD
- B. Acute Kidney Injury and Renal Replacement Therapy in Pediatric SCT/IEC Patients**  
Sangeeta Hingorani, MD  
Theresa Mottes, APRN
- C. Respiratory Management of Pediatric SCT/IEC Patients**  
Courtney Rowan, MD  
Ali Ahmad, DO
- D. Neurological Complications, Differential Diagnosis and Imaging Findings after Cellular Therapy**  
Linda Chi, MD  
Brandon Brown, MD
- E. Pain, Symptom Management and End of Life Care Planning**  
Karen Moody, MD

12:00 pm **Discussion**

12:30 Lunch

## **Interactive Simulation Sessions on IEC and SOS**

1:00 **SIM Introduction**

1:15 **CRS/ICANS Virtual Simulation**

3:00 Break

3:15 **Sinusoidal Obstruction Syndrome (SOS) Virtual Simulation**

5:15 **Panel Discussion**

5:30 Adjourn

Please let us know what specific topics, issues, or questions you wish to see addressed or emphasized in this activity. Email [PEPinfo@mdanderson.org](mailto:PEPinfo@mdanderson.org) and all responses will be forwarded to the Program Chairs for consideration.



## MD Anderson Faculty

**Ali Ahmad, DO**  
Pediatric Critical Care  
Medicine  
Assistant Professor  
Division of Pediatrics

**Brandon Brown, MD**  
Pediatric Hematology  
Oncology  
Fellow  
Division of Pediatrics

**Linda Chi, MD**  
Neuroradiology  
Professor  
Department of Neuroradiology

**Linette Ewing, DO**  
Pediatric Critical Care  
Medicine  
Assistant Professor  
Division of Pediatrics

**Sarah Featherston, RN**  
Stem Cell Transplantation  
and Cellular Therapy  
Lead Transplantation  
Coordinator  
Division of Pediatrics

**Avis Harden, MD**  
Stem Cell Transplant  
Fellow  
Division of Pediatrics

**Sajad Khazal, MBChB**  
Stem Cell Transplantation  
and Cellular Therapy  
Assistant Professor  
Division of Pediatrics

**Kris Mahadeo, MD, MPH**  
Stem Cell Transplantation and  
Cellular Therapy  
Associate Professor  
Division of Pediatrics

**Jeffrey Miller, APRN**  
Pediatric Stem Cell  
Transplantation and Cellular  
Therapy  
Advanced Practice  
Registered Nurse  
Division of Pediatrics

**Karen Moody, MD**  
Pediatric Supportive Care  
Associate Professor  
Division of Pediatrics

**Demetrios Petropoulos, MD**  
Stem Cell Transplantation  
and Cellular Therapy  
Professor  
Division of Pediatrics

**Dristhi Ragoonanan, MD**  
Pediatric Hematology Oncology  
Fellow  
Division of Pediatrics

**Shehla Razvi, MD**  
Pediatric Critical Care Medicine  
Assistant Professor  
Division of Pediatrics

**Basirat Shoberu, PharmD**  
Stem Cell Transplantation  
and Cellular Therapy  
Pediatric Clinical Research  
Specialist  
Division of Pediatrics

**Priti Tewari, MD**  
Stem Cell Transplantation and  
Cellular Therapy  
Associate Professor  
Division of Pediatrics

## Guest Faculty

**Selim Corbacioglu, MD**  
Pediatric Stem Cell Transplant  
Professor  
Children's Hospital of Regensburg,  
University of Regensburg Deutschland  
Regensburg, Bavaria Germany

**Matteo Di Nardo, MD**  
Pediatric Critical Care/ECMO  
Professor  
Children's Hospital Bambino Gesù  
Rome, Italy

**Sangeeta Hingorani, MD**  
Pediatric Nephrology  
Professor  
Seattle Children's Hospital  
Seattle, Washington

**Mira Kohorst, MD**  
Pediatric Stem Cell Transplant  
Assistant Professor  
Mayo Clinic Academic Center  
Rochester, Minnesota

**Theresa Mottes, APRN**  
Pediatric Nephrology  
Nurse Practitioner  
Nationwide Children's Hospital  
Columbus, Ohio

**Courtney Rowan, MD**  
Pediatric Critical Care  
Associate Professor  
Indiana University  
Indianapolis, Indiana

## Registration Information

The 3<sup>rd</sup> Contemporary Critical Care Complications of SCT/Cellular Therapies Virtual Simulation and Live-Streaming Conference opens at 8:30 a.m. on Thursday, May 27, 2021 and the conference ends at 6:00 p.m.

Advanced registration is encouraged as space and materials are limited.

**Maximum registration is 100 registrants.** Please see registration fees below.

**Register online for Thursday, May 27, 2021 course at:**  
<https://mdanderson.cloud-cme.com/course/courseoverview?P=0&EID=14572>

**Telephone registrations are not accepted.**

We accept the following forms of payment:

1. Check (payable through U.S. banks only)
2. Mail: UT MD Anderson Cancer Center  
CPE/Conference Management -  
Unit 1781  
1515 Holcombe Blvd.  
Houston, Texas 77030
3. Credit Cards (MasterCard, VISA, and American Express)

A receipt and confirmation letter will be sent to you within ten working days of receipt of your fee.

The full conference registration fee includes the tuition, final program, access to course virtual platform with PDF's of the slides and recorded videos.

You will receive instructions for the Virtual program via email 3-5 days prior to the conference. The requirement for the online training is that you must have a laptop/desktop computer, webcam and access to stable internet connection.

## Registration Fees

Trainees, Nurses, Other Healthcare Providers . . . . . \$50.00

Please select which date you are attending on the registration site.

## Refund/Cancellation Policy

The registration fee, minus a \$25 administrative handling fee, is refundable if a written request is received on or before **May 7, 2021**. No refunds will be granted after that date. The request for a registration refund must include the tax identification number of the company or institution if registration was paid by a company or institution check.

The Department of Continuing Professional Education (CPE) reserves the right to cancel activities prior to the scheduled date, if low enrollment or other circumstances make it necessary. Each registrant will be notified by mail, e-mail, or at the phone or fax numbers given on the registration form.

In case of activity cancellation, liability of the Department of CPE is limited to the registration fee. The Department of CPE will refund the full registration fee. The Department of CPE reserves the right to limit the number of participants in a program and is not responsible for any expenses incurred by an individual whose registration is not confirmed and for whom space is not available.

For additional information or special assistance contact the Department of CPE at 713-792-2223 or toll free at 866-849-5866.

Department of Continuing Professional Education- Unit 1781  
The University of Texas MD Anderson Cancer Center  
176700/30/123508/41  
PO Box 301407  
Houston, TX 77230-1407

---

Non-Profit Org.  
U.S. Postage  
PAID  
Houston, TX  
Permit No. 7052